

T. 15N. R. 64W.

15	14
22	23

RECEIVED
LARAMIE COUNTY
CHEYENNE, WY.

'94 MAR 25 PM 2 11

138872

CERTIFIED LAND CORNER RECORDATION

DESCRIPTION OF CORNER EVIDENCE FOUND, AND ORIGINAL RECORD (If known)

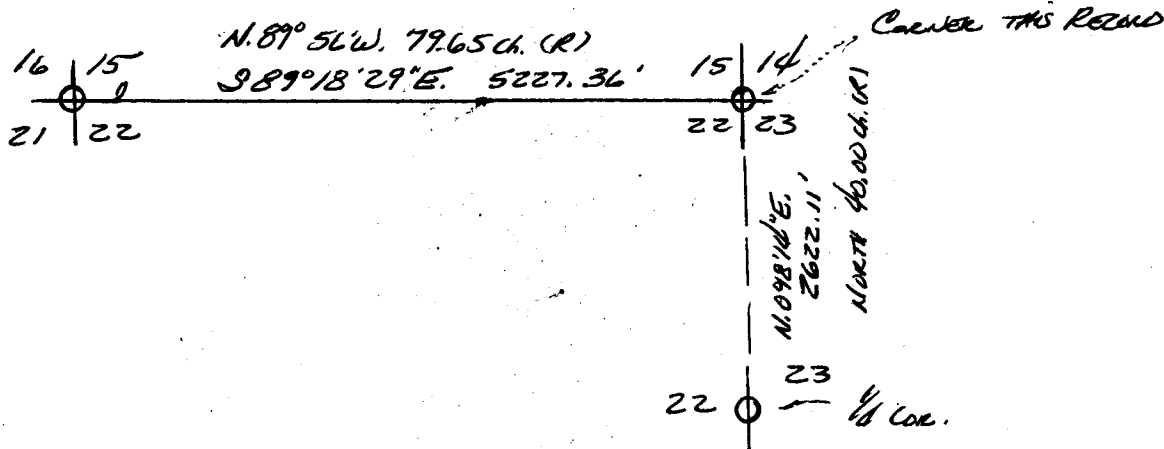
G.L.O. RECORD: 20.00 ch. SET A SANDSTONE 18X12X7 FOR CORNER TO SECTIONS 14, 15, 22 & 23 EDWIN JAMES & ALFRED M. RODGERS, U.S. DEPUTY SURVEYORS, JUNE, 1871

FOUND: 5 1/2" X 7 1/2" RED COLORED SANDSTONE MARKED \equiv ON So. EDGE AND - ON EAST EDGE @ THE WEST EDGE OF A FENCE COR. POST OF FENCES EXTENDING N/S/E.

DESCRIPTION OF MONUMENT AND ACCESSORIES ESTABLISHED TO PERPETUATE THE ORIGINAL LOCATION OF THIS CORNER:

SET: NOTHING - SEE SKETCH FOR TIES TO ADJACENT CORNERS

SKETCH, WITH COURSE AND DISTANCE TO ADJACENT CORNER IF DETERMINED IN THIS SURVEY. (May Sketch or Paste Reproduction on Reverse Side.)

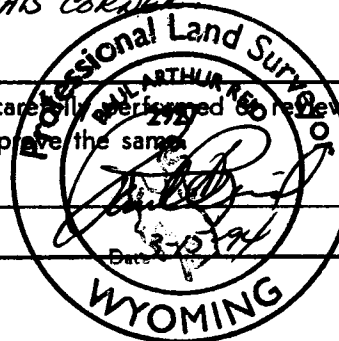


Basis of Bearings: Solar observation 1200' ± South of this corner

I, PAUL A. FLEID certify that I have carefully performed & reviewed the work done on the diagrammed corner as reported on this recordation form and approve the same.

Signature of Surveyor

Registration No.



STATE OF WYOMING,

Office of Clerk and Recorder,

County of LARAMIE

This "corner record" was filed for record on the _____ day of _____, 19____, was noted on the cross-index plat and is assigned page No. _____, in book No. _____.

County Official

Cross Index No. <u>N-17</u>	T. <u>15N.</u>	R. <u>64W. 6A</u>	Mer.
_____	T. _____	R. _____	Mer.
_____	T. _____	R. _____	Mer.
_____	T. _____	R. _____	Mer.
_____	T. _____	R. _____	Mer.
_____	T. _____	R. _____	Mer.
_____	T. _____	R. _____	Mer.

BOOK 1369

0537